

# Canada Goose

## Habitat Generalist

Wetland 

Urban 

Agriculture 

\* need water: lake, pond, river

- Long-distance Migrant
- Short-distance Migrant
- Resident

## Diet Generalist

Summer	Winter
Herbivore	Herbivore
grass, sedges	seeds, grains



# Wild Turkey

## Habitat Generalist

Forest 

Agriculture 

Urban 

- Long-distance Migrant
- Short-distance Migrant
- Resident

## Diet Generalist

Summer	Winter
Omnivore	Herbivore
seeds, insects, salamanders	nuts, berries buds, ferns



# Common Raven

## Habitat Generalist

Forest   
Urban   
Agriculture 

- Long-distance Migrant
- Short-distance Migrant
- Resident

## Diet Generalist

Summer & Winter

### Omnivore

carion, small animals, insects, fish, grains,  
berries, garbage



# Sedge Wren

## Habitat Specialist

Wetland   
Grassland 

- Long-distance Migrant
- Short-distance Migrant
- Resident

## Diet Specialist

Summer & Winter

### Insectivore

insects and spiders



# Bobolink

## Habitat Specialist

Grassland 

Agriculture 

- Long-distance Migrant
- Short-distance Migrant
- Resident

## Diet Specialist

Summer | Winter

<b>Insectivore</b> insects	<b>Omnivore</b> seeds, grains insects
-------------------------------	---



# Greater Prairie Chicken

## Habitat Specialist

Grassland 

- Long-distance Migrant
- Short-distance Migrant
- Resident

Diet Generalist  
Summer & Winter

**Omnivore**  
leaves, seeds, grains, insects



# Bald Eagle

## Habitat Generalist

Lake/River 

Wetland 

Forest 

\*need water: lake, pond, river

- Long-distance Migrant
- Short-distance Migrant
- Resident

## Diet Generalist

Summer & Winter

### Carnivore

fresh meat or carrion: fish, birds, mammals,  
herptiles



# Great Blue Heron

## Habitat Generalist

Lake/River 

Wetland 

\*need water: lake, pond, river

- Long-distance Migrant
- Short-distance Migrant
- Resident

## Diet Generalist

Summer & Winter

### Carnivore


fish, reptiles, amphibians, small mammals,  
birds



## European Starling

-Introduced from Europe in 1900s-

Habitat Generalist

Urban 

Agriculture 

- Long-distance Migrant
- Short-distance Migrant
- Resident

Diet Generalist

Summer & Winter

Omnivore

insects, berries, grains, seeds,  
livestock feed, garbage



## Wood Thrush

Habitat Specialist

Forest 

- Long-distance Migrant
- Short-distance Migrant
- Resident

Diet Generalist

Summer & Winter

Omnivore

insects, spiders, bugs, berries, fruit, snails,  
salamanders



# Herring Gull

## Habitat Generalist

Lake/River	
Wetland	
Agriculture	
Urban	

- Long-distance Migrant
- Short-distance Migrant
- Resident

## Diet Generalist

Summer & Winter

---

### Omnivore

fish, earthworms, eggs, birds,  
invertebrates, garbage



# Northern Harrier

## Habitat Specialist

Grassland	
Wetland	

- Long-distance Migrant
- Short-distance Migrant
- Resident

## Diet Specialist

Summer | Winter

<b>Carnivore</b> small mammals, birds, reptiles	<b>Carnivore</b> meadow voles
---	----------------------------------



# Upland Sandpiper

## Habitat Specialist

Grassland   
Agriculture 

- Long-distance Migrant
- Short-distance Migrant
- Resident

### Diet Specialist

Summer & Winter

**Insectivore**

Insects, worms, beetles, weevils,  
grasshoppers, crickets



# Scarlet Tanager

## Habitat Specialist

Forest 

- Long-distance Migrant
- Short-distance Migrant
- Resident

### Diet Specialist

Summer & Winter

**Insectivore**

Insects (both adult and larvae): flies,  
beetles & spiders.

\*Will eat fruit & buds if insects are scarce.



# American Redstart

## Habitat Specialist

Forest   
Urban 

- Long-distance Migrant
- Short-distance Migrant
- Resident

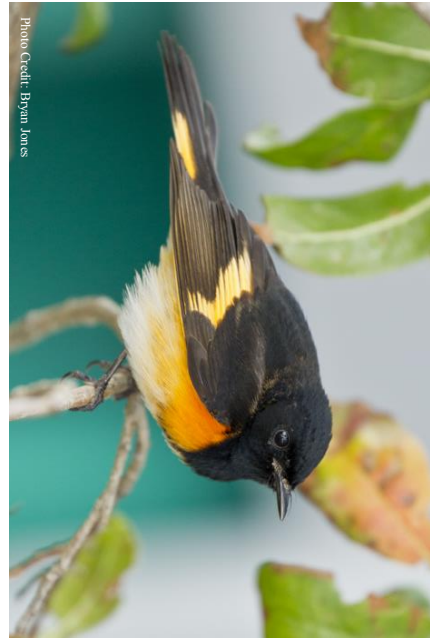
## Diet Specialist

Summer & Winter

---

### Insectivore

Leafhoppers, flies, wasps,  
beetles, & moths



# Rose-breasted Grosbeak

## Habitat Specialist

Forest   
Urban 

- Long-distance Migrant
- Short-distance Migrant
- Resident

## Diet Generalist

Summer & Winter

---

### Omnivore

Insects, fruit, & seeds





# Purple Martin

## Habitat Specialist

Urban

Agriculture



- Long-distance Migrant
- Short-distance Migrant
- Resident

## Diet Specialist

Summer & Winter

Insectivore

Flying insects



# Tree Swallow

## Habitat Specialist

Grassland

Wetland



- Long-distance Migrant
- Short-distance Migrant
- Resident

## Diet Specialist

Summer & Winter

Insectivore

Flying insects



# Gray Catbird

## Habitat Generalist

Forests



Urban



- Long-distance Migrant
- Short-distance Migrant
- Resident

## Diet Generalist

Summer & Winter

---

Omnivore

Insects & fruits



Photo Credit: John Benson

# Black-capped Chickadee

## Habitat Generalist

Forest



Urban



- Long-distance Migrant
- Short-distance Migrant
- Resident

## Diet Generalist

Summer & Winter

---

Omnivore

Insects, fruits & seeds



Photo Credit: Rick Lachle