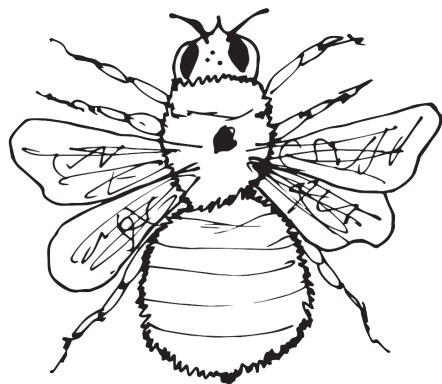


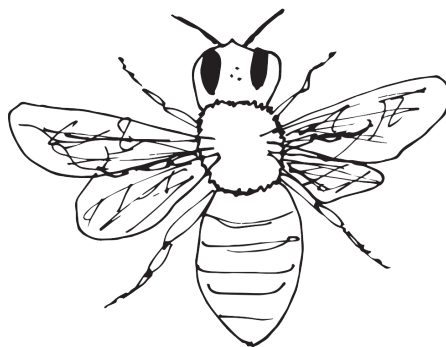
BUG FUN!

Bugs are awesome! Insects are a group of animals that have six legs and lay eggs. Most fly but not all. There are nearly 900 insect species in Wisconsin, and nearly 500 of them are native bee species. Wow! Learn more about some of our favorite types of insects below.



Bumble bee (species)

4 wings, very fuzzy, very round, some variation of black, yellow, white, and orange colonies of a few hundred, very gentle



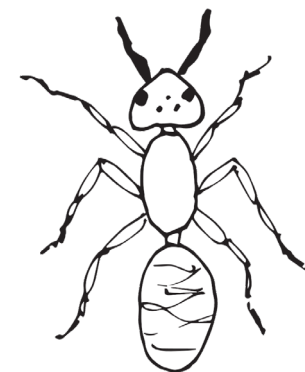
Honey bee (species, non-native)

4 wings, somewhat fuzzy, yellow, black, honey colored, colonies of a 20,000+, more aggressive near nest



Wasp (group)

4 wings, usually bald, yellow and black, slender waist, aggressive, hundreds to thousands in nest



Ant (group)

No wings (except queen), sometimes fuzzy, black, brown, red, thousands to millions in nest



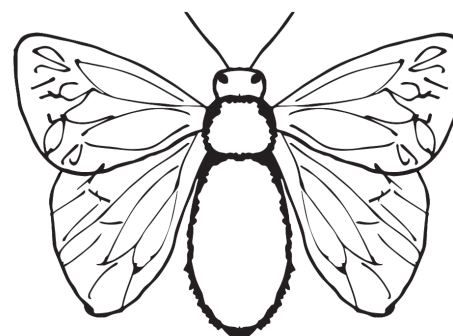
Fly (group)

2 wings, huge eyes, short antennae sometimes fuzzy, black, blue green or mimics, no nests (eggs laid then female leaves)



Butterfly (group)

4 wings, diurnal, tend to be colorful, clubbed antennae, no nests, makes a chrysalis for metamorphosis



Moth (group)

4 wings, nocturnal, muted colors, fuzzy and/or straight antennae, thicker body, no nests, makes a cocoon for metamorphosis

MADISON
AUDUBON



madisonaudubon.org

608.255.BIRD